

# Is there a difference in specific outcomes between those infants who are held during gavage feeding compared to those who are not?"

John Smith, MD<sup>1</sup>; Jane Doe, PhD<sup>2</sup>; Frederick Smith, MD, PhD<sup>1,2</sup>

<sup>1</sup>University of Affiliation, <sup>2</sup>Medical Center of Affiliation

## ABSTRACT

Click here to insert your Abstract text. Type it in or copy and paste from your Word document or other source.

This text box will automatically re-size to your text.

To change the border style of this text box: Double-click on the dashed border, select 'Colors and Lines', and change the border to solid or whatever style/color you like. Or 'No Line' to remove the border altogether.

To change the font style of this text box: Click on the border once to highlight the entire text box, then select a different font or font size that suits you. This text is in Arial 24pt and is easily readable up to 3 feet away in a 24x48 poster, and up to 6 feet away in a 48x96 poster (file printed at 200%).

## INTRODUCTION

Click here to insert your Introduction text. Type it in or copy and paste from your Word document or other source. Click once on the dashed border to highlight then drag the bottom edge up to fit. Or change the font size to fill the box.

Double-click the border and select 'Text Box', then check "Resize AutoShape to Fit Text" to have the box automatically re-size to your text.

To change the border style of this text box: Double-click on the dashed border, select 'Colors and Lines', and change the border to solid or whatever style/color you like. Or 'No Line' to remove the border altogether.

To change the font style of this text box: Click on the border once to highlight the entire text box, then select a different font or font size that suits you. This text is in Arial 24pt and is easily readable up to 3 feet away in a 24x48 poster, and up to 6 feet away in a 48x96 poster (file printed at 200%).

**The various elements and text boxes included in this template are examples of what we commonly see on posters of this kind. They are simply placeholders and you should feel free to add, delete, re-arrange, re-name, or re-size as best suits your needs.**

## RESULTS

**Currently we are in the process of enrolling babies to our study**

**Anticipated Benefit to Babies:**

Possible faster progression to full oral feeding (breast or bottle)

Possible faster weight gain

Possible decrease length of stay

Possible improvement in parent satisfaction

## DISCUSSION

Click here to insert your Discussion text. Type it in or copy and paste from your Word document or other source. Click once on the dashed border to highlight then drag the bottom edge up to fit. Or change the font size to fill the box.

Double-click the border and select 'Text Box', then check "Resize AutoShape to Fit Text" to have the box automatically re-size to your text.

To change the border style of this text box: Double-click on the dashed border, select 'Colors and Lines', and change the border to solid or whatever style/color you like. Or 'No Line' to remove the border altogether.

To change the font style of this text box: Click on the border once to highlight the entire text box, then select a different font or font size that suits you. This text is in Arial 24pt and is easily readable up to 3 feet away in a 24x48 poster, and up to 6 feet away in a 48x96 poster (file printed at 200%).

## METHODS AND MATERIALS

Click here to insert your Methods and Materials text. Type it in or copy and paste from your Word document or other source. Click once on the dashed border to highlight then drag the bottom edge up to fit. Or change the font size to fill the box.

Double-click the border and select 'Text Box', then check "Resize AutoShape to Fit Text" to have the box automatically re-size to your text.

To change the border style of this text box: Double-click on the dashed border, select 'Colors and Lines', and change the border to solid or whatever style/color you like. Or 'No Line' to remove the border altogether.

To change the font style of this text box: Click on the border once to highlight the entire text box, then select a different font or font size that suits you. This text is in Arial 24pt and is easily readable up to 3 feet away in a 24x48 poster, and up to 6 feet away in a 48x96 poster (file printed at 200%).

## CONTACT

<your name>  
<your organization>  
Email:  
Phone:  
Website:

## CONCLUSIONS

Click here to insert your Conclusions text. Type it in or copy and paste from your Word document or other source.

To change the font style of this text box: Click on the border once to highlight the entire text box, then select a different font or font size that suits you. This text is in Arial 24pt and is easily readable up to 3 feet away in a 24x48 poster, and up to 6 feet away in a 48x96 poster (file printed at 200%).

## REFERENCES

1. Click here to insert your References. Type it in or copy and paste from



Figure 1. Label in 20pt Arial.



Figure 2. Label in 20pt Arial.

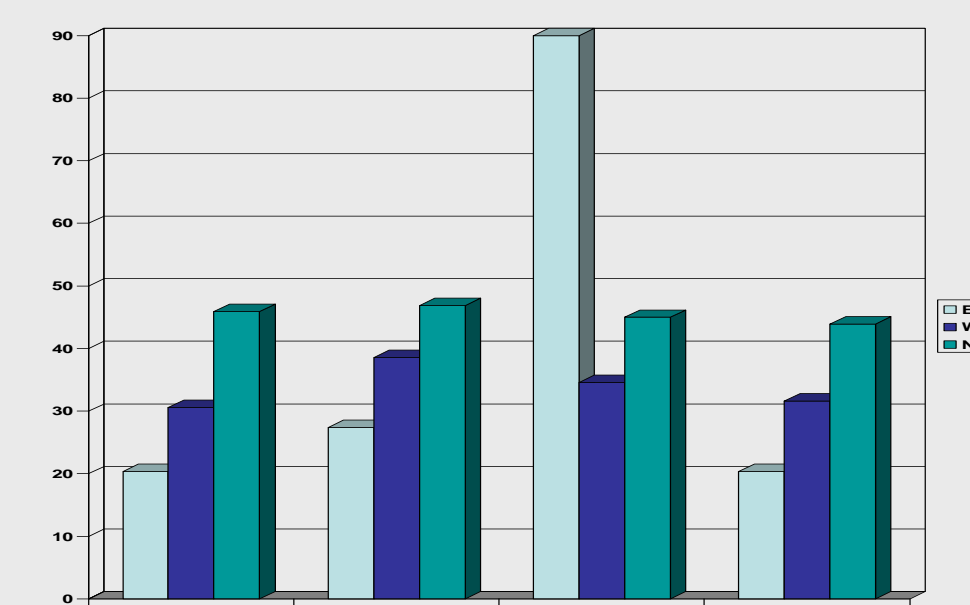


Chart 1. Label in 20pt Arial.

	A	B	C	D
Patient 1				
Patient 2				
Patient 3				
Patient 4				

Table 1. Label in 20pt Arial.